

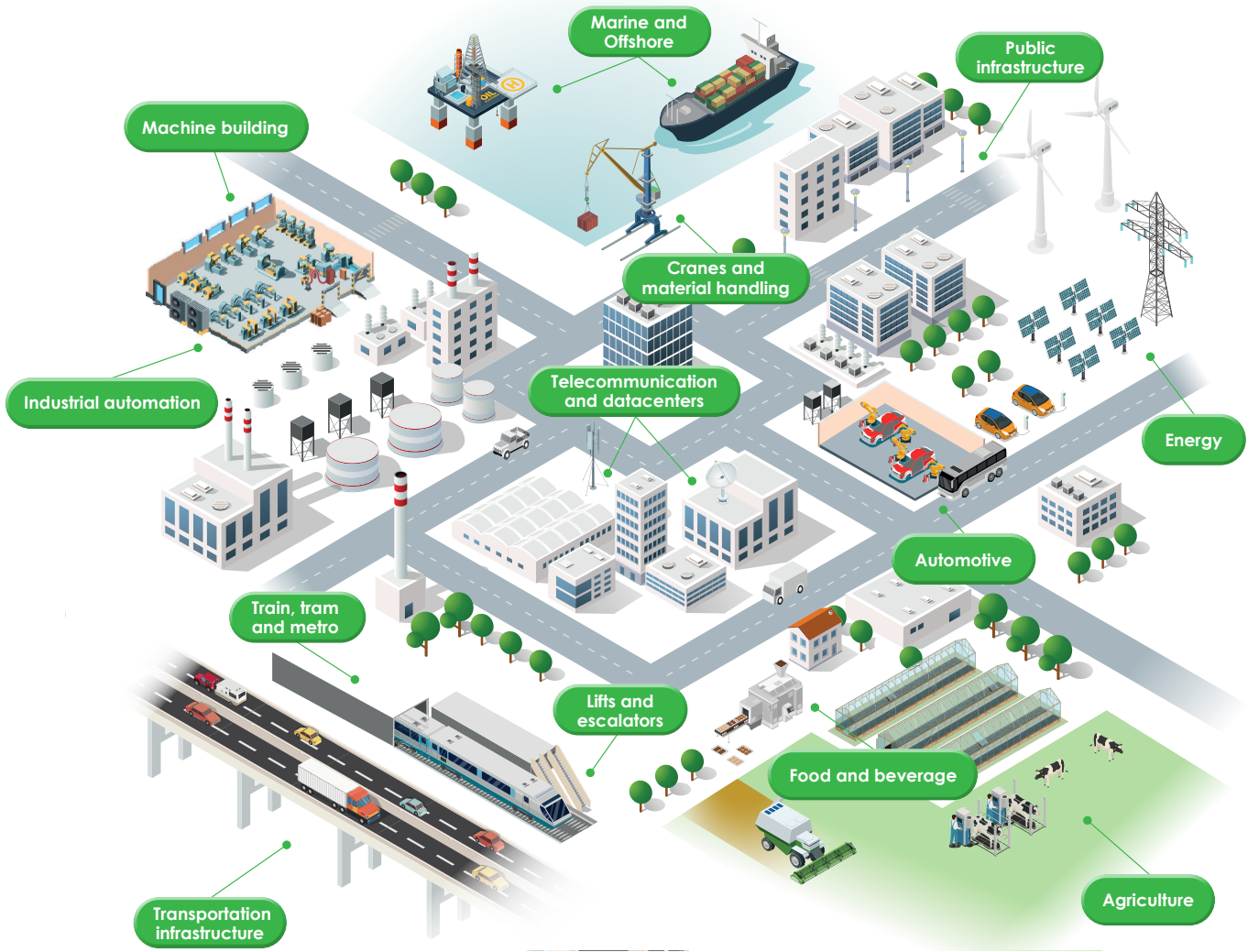


CABLE
CONNECTIVITY
GROUP

Product Overview

Benelux





CCG Solutions

Segment Overview

As a reliable partner, the Cable Connectivity Group not only has access to an extremely large portfolio of standard cables. Our technicians and experts develop the right special cables for your individual requirements in a short time.

Distribution product portfolio

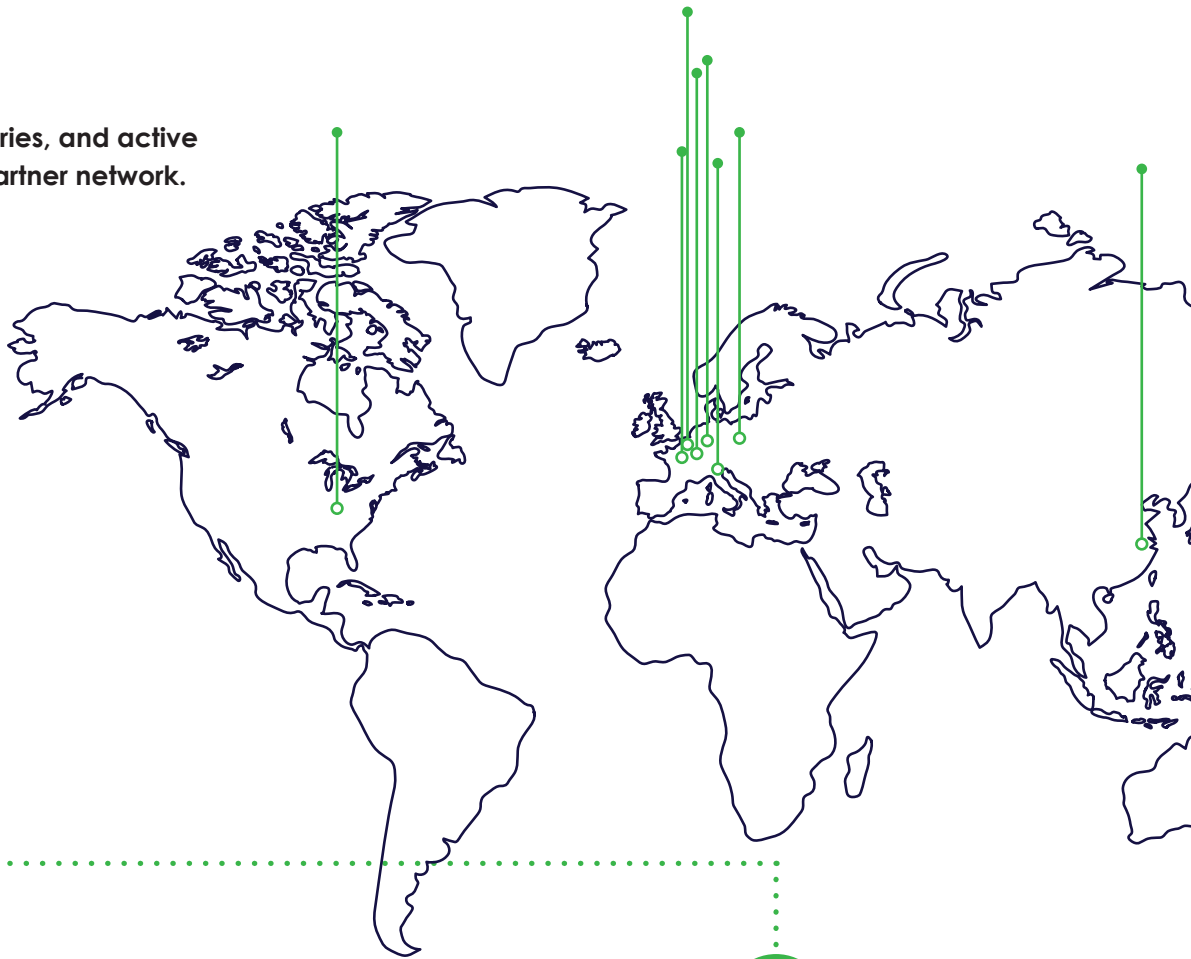
Jobarco and TKD are CCG's distribution partners and specialize in all types of cables. As a distribution partner, Pantaflex perfectly complements the cable range with cable accessories. Together, this is a broad and complementary portfolio, with which CCG can supply many types of cables and components that are available in stock for quick and reliable delivery.



Footprint in 8 countries, and active globally with our partner network.

Own branches in:

- Netherlands
- Belgium
- Germany
- Poland
- Italy
- France
- China
- USA



CCG Worldwide Globally active

Welcome to the product portfolio of the Cable Connectivity Group (CCG) Distribution. CCG is one of the world's leading suppliers of cables, ready-to-connect cable systems and cable accessories.

CCG was created as a result of the merger of several successful companies in the cable and connectivity industry. One of the 1st companies started its activities in the cable business already in 1933, which are located in the Netherlands, Belgium, Germany, Italy, Poland, France, China and the USA, the company produces, distributes and assembles special cables, cable harnesses and accessories for customers and wholesalers.



Distribution

knowledge company with added value in cables and accessories for wholesale and OEM customers with branches in the Netherlands, Belgium, Germany, Italy, Poland, France, China and the USA.



Assembly

customer-specific assembly of connectivity solutions for OEM customers with own locations in the Netherlands, Poland and Germany.



Production

the production of a wide range of special cables.



We provide the expertise to safely and reliably connect for a faster, smarter and sustainable world.

Portfolio Overview Benelux

Contents at a glance

| | Category-Name | Page |
|---|---|------|
|  | Flexible control cables | 6 |
|  | Electronic (LF), instrumentation & telecommunication cables | 8 |
|  | BUS, LAN, coaxial & video cables | 10 |
|  | Control and data cables – high flexible | 12 |
|  | Servo-drives, measurement & system cables – flexible & high flexible | 14 |
|  | Crane, conveyor and lift cables | 16 |
|  | Rubber cables | 20 |
|  | Extreme temperature cables | 22 |
|  | Cables and wires for fixed installation | 24 |
|  | Special cables | 26 |
|  | CONNECTivity | 28 |
|  | Accessories – Cable gland systems, connection, drag chain system, cable protection systems, lift components | 30 |
|  | PMA® cable protection hose & accessories | 32 |
|  | ELPRESS® Crimping tools & cable lugs | 36 |
|  | EKD drag chain & accessories | 38 |

Flexible control cables

Flexible control cables are widely used across all different industries and applications. They connect electrical equipment like motors, switching devices and connect different electrical cabinets or simply distribute LV power across your industrial applications.

We are offering different voltage ranges starting with 300/500V up to 1kV to cope with different requirements inside of the application.

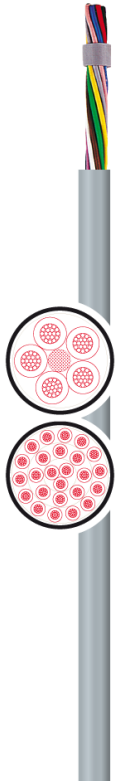
A wide range of different combination of insulations and sheath compounds suitable for all demands and regulations i.e. PVC/PVC or halogen free compounds or extremely robust PUR (Polyurethan) cables are available.

Depending on the application, we have cables in unshielded or shielded version to cope with EMC (Electromagnetic compatibility) requirements, as well as complying to different national standards like KEMA and multinational standards like UL/CSA.

As a highlight, we have a wide range of cables that meet the CPR requirements in different classifications. Here especially our **HH-JZ/OZ** family, which is Cca classified or the shielded version **HCH- JZ/OZ**, which even meets the B2ca requirement.

On top of it we are also able to offer cables with ECOLAB certification in for instance food or healthcare applications.



**PVC Control cables**

| | |
|--------------------|--|
| EQ CC -JB/OB Eca | 300/500V, 450/750V, 0,6/1kV, unshielded, CPR Eca |
| EQ CC -JZ/OZ Eca | 300/500V, unshielded, CPR Eca |
| EQ CY-JZ/OZ Eca | 300/500V, shielded, CPR Eca |
| EQ SO -JZ/OZ Eca | 300/500V, steel wire braided, CPR Eca |
| LIYY-JZ/OZ Dca S2 | 300/500V, unshielded, CPR Dca |
| LIYCJ-JZ/OZ Dca S2 | 300/500V, shielded, CPR Dca |

Approved Control cables

| | |
|--------------------------------|--|
| KEMAFLEX KVCC-JZ/OZ Dca | 300/500V, unshielded, KEMA, HAR, CPR Dca |
| KEMAFLEX KVCY-JZ /OZ Dca | 300/500V, shielded, KEMA, HAR, CPR Dca |
| KEMAFLEX KVCY-JZ /OZ Blauw Dca | 300/500V, shielded, KEMA, HAR, CPR Dca |
| TRIOFLEX CC-JZ/OZ Eca | 300/500V, unshielded, HAR, UL/CSA, CPR Eca |
| TRIOFLEX CY-JZ/OZ Eca | 300/500V, unshielded, HAR, UL/CSA, CPR Eca |
| TRAY CABLES CC-JZ/OZ | 600V, unshielded, UL/CSA |
| TRAY CABLES CY-JZ/OZ | 600V, shielded, UL/CSA |

Halogen-free Control cables

| | |
|-------------------|-------------------------------|
| HH-JZ/OZ Cca | 300/500V, unshielded, CPR Cca |
| HCH-JZ/OZ-CH B2ca | 300/500V, shielded, CPR B2ca |

PUR Control cables

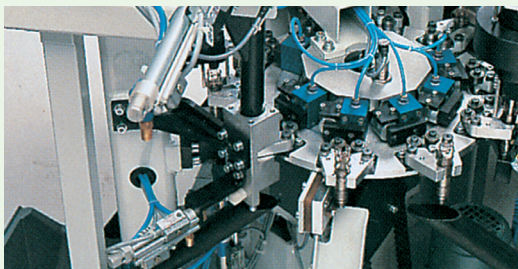
| | |
|------------------|----------------------|
| H05BQ-F | 300/500V, unshielded |
| H07BQ-F | 450/750V, unshielded |
| PUR-PVC OZ/JZ | 300/500V, unshielded |
| PUR-PVC-CP OZ/JZ | 300/500V, shielded |

PUR Control cables halogen-free

| | |
|--------------------|------------------------------------|
| PUR-TPE-H JO/JZ | 300/500V, unshielded, halogen-free |
| PUR-TPE-CH OZ/JZ | 300/500V, shielded, halogen-free |
| PUR-TPE-CW-H OZ/JZ | 300/500V, shielded, halogen-free |

TPE Control cables halogen-free

| | |
|-------------|---|
| SAN-JB/OB | 300/500V, unshielded, halogen-free, +110 °C, ECOLAB |
| SAN-JZ/OZ | 300/500V, unshielded, halogen-free, +110 °C, ECOLAB |
| SAN-C JZ/OZ | 300/500V, shielded, halogen-free, +110 °C, ECOLAB |
| SAN-F | 300/500V, unshielded, halogen-free, flat cable, +110 °C, ECOLAB |



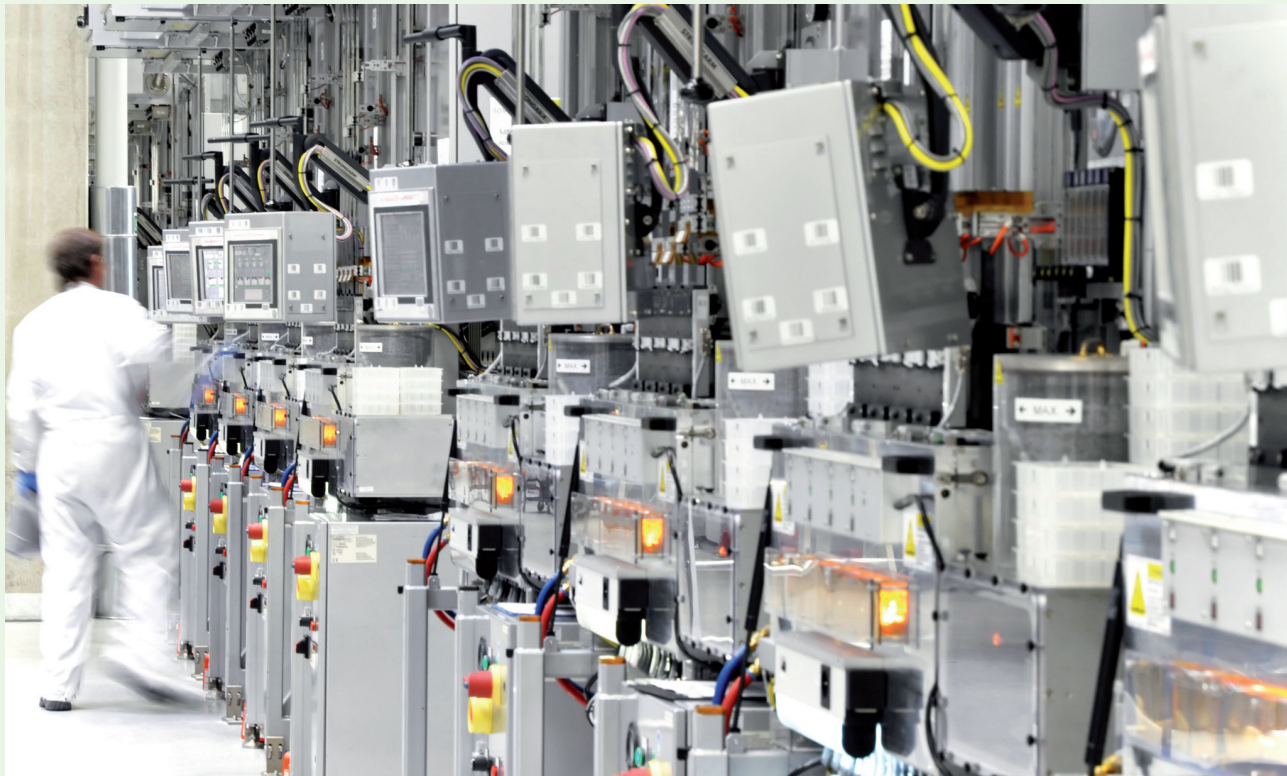
Electronic (LF), instrumentation & telecommunication cables

Electronic (LF), Instrumentation & Telecommunication cables help to transmit analogue and digital data and signals in all kinds of process-controlled facilities as well as for telecommunication applications, i.e., fire detection applications.

Depending on the application the range is starting with cables for electronic data transmission in flexible and fixed installations with PVC insulation and PVC sheath as well as halogen free options or even extremely robust PUR (Polyurethan) versions. They are available in unshielded or shielded to cope with EMC (Electromagnetic compatibility) demands.

Furthermore you will find instrumentation cables acc. to EN 50288-7 suitable in all kinds of process-controlled factory applications for example in chemical plants with different kinds of mechanical protections like steel wire armouring or even ATEX certification.

As highlight we have a wide range of cables complying with CPR requirements in different classification.



Electronic (LF), instrumentation & telecommunication cables



PVC Electronic cables

| | |
|------------|---|
| EQ C Eca | DIN47100, 250V/300V, unshielded, CPR Eca |
| EQ CY Eca | DIN47100, 250V/300V, shielded, CPR Eca |
| EQ CKY Eca | DIN47100, 250V/300V, twisted pairs, shielded, CPR Eca |

Halogen-free Electronic cables

| | |
|---------------|--|
| HCH-O Cca | DIN47100, 300V/500V, shielded, CPR Cca |
| HCH-TP-O B2ca | DIN47100, 250V/300V, twisted pairs, shielded, CPR B2ca |

PUR Electronic cables halogen-free

| | |
|--------------|--|
| PUR-TPE-H | DIN47100, 300V, unshielded, halogen-free |
| PUR-TPE-CH | DIN47100, 300V, shielded, halogen-free |
| PUR-TPE-CW-H | DIN47100, 300V, shielded, halogen-free |

Instrumentation cables

Standard - EN50288-7

| | |
|----------------------------|---|
| RE-2X(St)Y-FL Dca | 300V, overall shielding, CPR Dca |
| RE-2X(St)Y-FL PIMF Dca | 300V, individual and overall shielding, CPR Dca |
| RE-2X(St)YSWBY FL Dca | 300V, overall shielding and steel wire braid, CPR Dca |
| RE-2X(St)YSWBY FL PIMF Dca | 300V, individual and overall shielding, steel wire braid, CPR Dca |
| RE-2X(St)YSWAY FL PIMF Dca | 300V, individual and overall shielding, steel wire armored, CPR Dca |

ATEX IEC 60079-14:2014 & Standard EN50288-7

| | |
|-----------------------------|--|
| ATEX RE-2X(St)Yv-FL | 300V, overall shielding |
| ATEX RE-2X(St)Yv-FL PIMF | 300V, individual and overall shielding |
| ATEX RE-2X(St)YSWBY FL | 300V, overall shielding and steel wire braid |
| ATEX RE-2X(St)YSWBY FL PIMF | 300V, individual and overall shielding, steel wire braid |

Telecommunication cables

Indoor -PVC

| | |
|----------------------|--|
| YY Dca | 300V, unshielded, grey, CPR Dca |
| Y(St)Y Dca | 300V, overall shielding, grey, CPR Dca |
| YY FireAlarm Dca | 300V, unshielded, red, CPR Dca |
| Y(St)Y FireAlarm Dca | 300V, overall shielding, red, CPR Dca |

Indoor - Halogen-free

| | |
|-----------------------|---|
| HH Cca | 300V, unshielded, grey, CPR Cca |
| H(St)H Cca | 300V, overall shielding, grey, CPR Cca |
| HH B2ca | 300V, overall shielding, grey, CPR B2ca |
| H(St)H B2ca | 300V, overall shielding, grey, CPR B2ca |
| HH FireAlarm B2ca | 300V, overall shielding, red, CPR B2ca |
| H(St)H FireAlarm B2ca | 300V, overall shielding, red, CPR B2ca |

Outdoor - Underground installation

| | |
|------------|--|
| VO-JY(St)Y | 300V, overall shielding, steel wire braid, green or blue |
|------------|--|

Specials

| | |
|---------------------------|---|
| TELECOMSAFE N45 B2ca | 300V, overall shielding, grey, acc. KPN/PTT N45, CPR B2ca |
| TUNNELSAFE J-H(St)CH B2ca | 300V, overall shielding (foil + copper braid), grey, CPR B2ca |
| SECURITYSAFE B2Ca | 300V, overall shielding, grey, CPR B2ca |

BUS, LAN, coaxial & video cables

BUS, LAN, coaxial & video cables are used for transmission of all bus and LAN communication like i.e. **PROFIBUS, CAN BUS** or other relevant protocols as well as Coaxial and video cables for transmission of high frequency data.

They are used in fixed installations for Network infrastructure, as well as flexible cables for connection of different devices along the whole industrial application i.e. in drag chain systems or elevators and comply with the different standard transmission rates Cat.5 up to Cat.7A.

Depending on the application and environmental requirements, the cables comply with different standards like i.e. UL/CSA listings and partly classified according to the CPR regulations.

A specific focus is set on the **Industrial Ethernet** portfolio with cables complying with **PROFINET** organisation requirements, as well as cables for other industrial ethernet applications and divided to the different installation categories. i.e. Type A for fixed installations, Type B for flexible installations as well as Type C and R for high dynamic usage.



**BUS | FIELDBUS technology****Industrial automation**

PROFIBUS DP / FMS / FIP 150 Ohm

PROFIBUS DP / FMS / FIP 150 Ohm

PROFIBUS PA 100 Ohm

MULTIBUS & INTERBUS 100 - 120 Ohm

MULTIBUS & INTERBUS 100 - 120 Ohm

CAN BUS - ControllerAreaNetwork 120 Ohm

CAN BUS - ControllerAreaNetwork 120 Ohm

DeviceNet 120 Ohm

DeviceNet 120 Ohm

ASi-BUS Aktor Sensor Interface

ASi-BUS Aktor Sensor Interface

Building automation

INSTABUS KNX/EIB - PVC Eca

INSTABUS KNX/EIB - H Dca, Cca & B2ca

for fixed installation & limited flexible applications, UL/CSA

for high flexible applications (drag chain, robotic & festoon) UL/CSA

for fixed installation & limited flexible applications, UL/CSA

for fixed installation & limited flexible applications, UL/CSA

for high flexible applications (drag chain) UL/CSA

for fixed installation & limited flexible applications, UL/CSA

for high flexible applications (drag chain) UL/CSA

for fixed installation & limited flexible applications, UL/CSA

for high flexible applications (drag chain) UL/CSA

for fixed installation & limited flexible applications, UL/CSA

for high flexible applications (drag chain) UL/CSA

for fixed installation, CPR Eca

for fixed installation, halogen-free, different CPR Versions available

LAN | ETHERNET technology**Industrial automation**

PROFINET Cat.5e (Type A & B)

PROFINET Cat.5e (Type C & R)

INDUSTRIAL ETHERNET Cat.5e - Cat.7A
(Type A & B)INDUSTRIAL ETHERNET Cat.5e - Cat.7A
(Type C & R)

for fixed installation, limited flexible & flexible use, UL/CSA

for high flexible applications (drag chain, robotic & festoon) UL/CSA

for fixed installation, limited flexible & flexible use, UL/CSA

for high flexible applications (drag chain, robotic, reeling & festoon) UL/CSA

Building automation

LAN Cat.5e -

200 MHz Eca, Dca, Cca & B2ca

LAN Cat.6 - 250 & Cat.6A -

500 Eca, Dca, Cca & B2ca

LAN Cat.7 - 600, Cat.7A - 1000 & Cat.7e -

1200...1500 Eca, Dca, Cca & B2ca

for structured building cabling (for fixed installation & for patch),
different CPR Versions availablefor structured building cabling (for fixed installation & for patch),
different CPR Versions availablefor structured building cabling (for fixed installation & for patch),
different CPR Versions available**Specials**

CAT4 UTP PH60-E30

for structured building cabling (for fixed installation & for patch),
fire resistant PH60/E30, unshielded, halogen-free**Coaxial & Video cables**

CCG Coax & Video cables are available with different (special) compounds and fulfill a wide range of applications in various environments (e.g. indoor / outdoor / direct burial / halogen-free etc.)

50Ω coaxial cables

RG58

RG174

RG178

RG213

RG214

RG223

solid/stranded, various outer sheaths (PVC / PE / FEP)

solid/stranded, PVC

silver-covered copper-clad steel (SCCS), FEP

stranded, PVC

stranded, PVC

solid, PVC

75Ω coaxial cables

RG11

RG179

solid/stranded, various outer sheaths (PVC / PE/ FEP)

solid/stranded, various outer sheaths (PVC / FEP)

Other coaxial & video cables

RG62 93Ω

solid, various outer sheaths (PVC / PE/ FEP)

Control and data cables – high flexible – use in drag chains & robotic applications

Control and data cables – high flexible are the complementary versions of our standard control and electronic cables but for extreme harsh applications such as drag chain systems or robotic applications where an outstanding mechanical performance is needed.

Similar as the standard portfolio they are available in different voltage classes and depending on the application in different designs related to material choice as well as national and international standards.

The specific designs allow our cables to be capable of withstanding the specific requirements in drag chain systems as well as robotic applications with continuous movement cycles or a lot of bending cycles occur. Available in various versions where a high number of bending cycles or high accelerations are required due to the application.

The **KAWEFLEX® 6 series** allows due to its specific design up to 10 Mio. bending cycles and is available in halogen free and UV resistant versions.

For sure all versions are available in shielded and unshielded versions to cope with EMC (Electromagnetic compatibility) requirements.

Thanks to the specific design developed inhouse, the reliability of shielded versions are outstanding even to high mechanical requirements.



Control and data cables – high flexible – use in drag chains & robotic applications



Drag chain Control cables

Highflex CC-BD UL/CSA
 Highflex CY-BD UL/CSA
 KAWEFLEX® 6100 ECO SK-PVC UL/CSA
 KAWEFLEX® 6110 SK-PVC UL/CSA
 KAWEFLEX® 6110 TRAY SK-PVC UL/CSA
 KAWEFLEX® 6200 ECO SK-C-PVC UL/CSA
 KAWEFLEX® 6210 SK-C-PVC UL/CSA
 KAWEFLEX® 6210 TRAY SK-C-PVC UL/CSA

for light to medium requirements, 300/500V, unshielded, UL/CSA
 for light to medium requirements, 300/500V, shielded, UL/CSA
 for light to medium requirements, 300/500V, unshielded, UL/CSA
 for normal requirements, 300/500V, unshielded, UL/CSA
 for normal requirements, 300/500V, unshielded, UL/CSA
 for light to medium requirements, 300/500V, shielded, UL/CSA
 for normal requirements, 300/500V, shielded, UL/CSA
 for normal requirements, 300/500V, shielded, UL/CSA

Drag chain Control cables – high requirements

Highflex PUR-PBT
 Highflex PUR-PBT-CH
 KAWEFLEX® 6120 SK-PUR UL/CSA
 KAWEFLEX® 6130 SK-PUR UL/CSA
 KAWEFLEX® 6230 SK-C-PUR UL/CSA
 KAWEFLEX® Allround 7110 SK-PVC UL/CSA
 KAWEFLEX® Allround 7130 SK-PUR UL/CSA
 KAWEFLEX® Allround 7140 SK-TPE UL/CSA
 KAWEFLEX® Allround 7210 SK-C-PVC UL/CSA
 KAWEFLEX® Allround 7230 SK-C-PUR UL/CSA
 KAWEFLEX® Allround 7240 SK-C-TPE UL/CSA

for high requirements, 300/500V, unshielded
 for high requirements, 300/500V, shielded
 for increased requirements, 300/500V, unshielded, UL/CSA
 for high requirements, 300/500V, unshielded, halogen-free, UL/CSA
 for high requirements, 300/500V, shielded, halogen-free UL/CSA
 for increased requirements, 300/500V, unshielded, UL/CSA
 for high requirements, 300/500V, unshielded, halogen-free, UL/CSA
 for highest requirements, 300/500V, unshielded, UL/CSA
 for increased requirements, 300/500V, shielded, UL/CSA
 for high requirements, 300/500V, shielded, halogen-free, UL/CSA
 for highest requirements, 300/500V, shielded, UL/CSA

Drag chain Electronic cables

KAWEFLEX® 6310 SK-PVC UL/CSA
 KAWEFLEX® 6410 SK-C-PVC UL/CSA
 KAWEFLEX® 6510 SK-TP-C-PVC UL/CSA

for normal requirements, DIN47100, 300V, unshielded, UL/CSA
 for normal requirements, DIN47100, 300V, shielded, UL/CSA
 for normal requirements, DIN47100, 300V, twisted pairs, shielded, UL/CSA

Drag chain Electronic cables – high requirements

Highflex PUR-TPE-CKH
 KAWEFLEX® 6330 SK-PUR UL/CSA
 KAWEFLEX® 6430 SK-C-PUR UL/CSA
 KAWEFLEX® 6530 SK-TP-C-PUR UL/CSA

for high requirements, DIN47100, 300V, twisted pairs, shielded, halogen-free
 for high requirements, DIN47100, 300V, unshielded, halogen-free, UL/CSA
 for high requirements, DIN47100, 300V, shielded, halogen-free, UL/CSA
 for high requirements, DIN47100, 300V, twisted pairs, shielded, halogen-free, UL/CSA

Robot application cables

Robotic control and power cables

Highflex PUR Robot 3D
 KAWEFLEX KINEMATICS®
 3D-PUR C&P 0,6/1kV UL/CSA
 KAWEFLEX KINEMATICS®
 3D-C-PUR C&P 0,6/1kV UL/CSA

for bending and torsion applications, 0,6/1kV, unshielded, halogen-free, UL/CSA
 for bending and torsion applications, 0,6/1kV, unshielded, halogen-free, UL/CSA
 for bending and torsion applications, 0,6/1kV, shielded, halogen-free, UL/CSA

Robotic data cables

KAWEFLEX KINEMATICS® 3D PUR Data
 KAWEFLEX KINEMATICS® 3D-C-PUR Data
 KAWEFLEX KINEMATICS®
 3D-C-PUR Data (TP)
 KAWEFLEX KINEMATICS®
 3D-C-PUR Data (TP)C

for bending and torsion applications, DIN47100, 300V, unshielded, halogen-free, UL/CSA
 for bending and torsion applications, DIN47100, 300V, shielded, halogen-free, UL/CSA
 for bending and torsion applications, DIN47100, 300V, twisted pairs, overall shielded, halogen-free, UL/CSA
 for bending and torsion applications, DIN47100, 300V, shielded twisted pairs and overall shielding, halogen-free, UL/CSA

Servo-drives, measurement & system cables flexible & high flexible for use in drag chains and robot applications

This Chapter includes Servo-drives, measurement & system cables for the electric drive technology Variants for fixed installation as well as high flexible cables for use in permanent (highly) dynamic applications like drag chain or robotic.

The **KAWEFLEX® Servo 2X... EMC** double screened versions for fixed installation and casually movement as Power, control and connecting cable for drive systems with frequency converter technology - The XLPE core insulation offer the same reliability as the standard PE version but thanks to the choice of insulation system it could operate at a higher core temperature (2X: 90°C max conductor temp. vs 2Y: 70°C for standard PE versions).

Starting with a cross section of 10mm² they are available in optimized design where the earth conductor is located in the interstices of the conductor assembly resulting in much lower diameter and reduced weight.

This is complemented by the **KAWEFLEX® 5** series for high flexible use in drag chains as Servo-Drive, feedback, encoder, resolver, speed sensor, signal & system cables for EMC compatible connecting. These cables are compatible and according to Siemens (MC 500, MC800PLUS), Bosch Rexroth, SEW Eurodrive, Lenze and others systems in our portfolio.

Our **KINEMATICS® 3D series** additionally withstands a large number of cycles in torsional use for robotic applications.



Cables for servo-drives 0,6/1kV

| | |
|---|---|
| KAWEFLEX® SERVO 2XSL(St)CY... & 2XSL(St)CYK... 0,6/1 kV EMC-UV | 0,6/1kV, double shielded |
| KAWEFLEX® SERVO 9YSL(St)CY... VFD UL/CSA 0,6/1 kV EMC-UV Eca | 0,6/1kV, double shielded, UL/CSA, CPR Eca |
| ROZ1-K(AS) EMC Cca | 0,6/1kV, double shielded, halogen-free, CPR Cca |
| EMC-HH-JB 0,6/1kV Cca | 0,6/1kV, double shielded, halogen-free, CPR Cca |

KAWEFLEX® 5 Series – Cables for servo-drives

CCG KAWEFLEX® series cables supports systems such as B&R, Baumüller, Berger Lahr, Control Techniques, ELAU, Fagor, FANUC, Heidenhain, Jetter, Lenze, LTI DRIVES, NUM, Omron, Rexroth, SEW, Siemens, Sick, Stöber, a.o.

Single core – high flexible

| | |
|---|--|
| KAWEFLEX® 5178 SC-SK PVC 0,6/1kV UL/CSA | for drag chain applications, 0,6/1kV, unshielded, UL/CSA |
| KAWEFLEX® 5278 SC-SK C-PVC 0,6/1kV UL/CSA | for drag chain applications, 0,6/1kV, shielded, UL/CSA |

Multi core – high flexible

| | |
|---|--|
| KAWEFLEX® 5268 SK PVC 0,6/1kV UL/CSA | for drag chain applications, 0,6/1kV, unshielded, UL/CSA |
| KAWEFLEX® 5278 SK C-PVC 0,6/1kV UL/CSA | for drag chain applications, 0,6/1kV, shielded, UL/CSA |
| KAWEFLEX® 5288 SK C-PUR 0,6/1kV UL/CSA | for drag chain applications, high requirements 0,6/1kV, shielded, UL/CSA |
| KAWEFLEX® 52DSL C-PVC 0,6/1kV UL/CSA | for flexible applications, 0,6/1kV, shielded, UL/CSA |
| KAWEFLEX® 52DSL SK-C-PVC 0,6/1kV UL/CSA | for drag chain applications, 0,6/1kV, shielded, UL/CSA |

Measurement & System – high flexible (feedback, encoder, resolver, speedo sensor, signal)

| | |
|--------------------------------|--|
| KAWEFLEX® 5468 C-PVC UL/CSA | for flexible applications, 300V, shielded, UL/CSA |
| KAWEFLEX® 5488 SK-C-PUR UL/CSA | for drag chain applications, high requirements, 300V, shielded, halogen-free, UL/CSA |

KAWEFLEX® ServoDriveQ - for DriveCliq applications

| | |
|--|--|
| KAWEFLEX® ServoDriveQ C-PVC UL/CSA | for fixed installation, limited flexible use, 300V, shielded, UL/CSA |
| KAWEFLEX® ServoDriveQ FLEX-C-PVC UL/CSA | for flexible applications, 300V, shielded, UL/CSA |
| KAWEFLEX® ServoDriveQ Plus SK-C-PUR UL/CSA | for drag chain applications, high requirements, 300V, shielded, halogen-free, UL/CSA |

KAWEFLEX® Allround Motor Cables

Single core – high flexible

| | |
|--|--|
| KAWEFLEX® Allround 7510 SK-TPE (NATURE) UL/CSA | for drag chain applications, highest requirements, 0,6/1kV, unshielded, halogen-free, UL/CSA |
| KAWEFLEX® Allround 7520 SK-TPE (GNYE) UL/CSA | for drag chain applications, highest requirements, 0,6/1kV, unshielded, halogen-free, UL/CSA |
| KAWEFLEX® Allround 7610 SK-C-TPE (NATURE) UL/CSA | for drag chain applications, highest requirements, 0,6/1kV, shielded, halogen-free, UL/CSA |

Multi core – high flexible

| | |
|---|--|
| KAWEFLEX® Allround 7310 SK-PVC UL/CSA | for drag chain applications, increased requirements, 0,6/1kV, unshielded, UL/CSA |
| KAWEFLEX® Allround 7320 SK-TPE UL/CSA | for drag chain applications, highest requirements, 0,6/1kV, unshielded, halogen-free, UL/CSA |
| KAWEFLEX® Allround 7410 SK-C-PVC UL/CSA | for drag chain applications, increased requirements, 0,6/1kV, shielded, UL/CSA |
| KAWEFLEX® Allround 7420 SK-C-TPE UL/CSA | for drag chain applications, highest requirements, 0,6/1kV, shielded, UL/CSA |

KAWEFLEX KINEMATICS® 3D - for robotic applications

Multi core – high flexible

| | |
|---|---|
| KAWEFLEX KINEMATICS® 3D-C-PUR Servo 0,6/1kV UL/CSA | for bending and torsion applications, 0,6/1kV, shielded, halogen-free, UL/CSA |
|---|---|

Measurement & System – high flexible (feedback, encoder, resolver, speedo sensor, signal)

| | |
|--|--|
| KAWEFLEX KINEMATICS® 3D-C-PUR MeSys UL/CSA | for bending and torsion applications, 300V, shielded, halogen-free, UL/CSA |
|--|--|

Hybrid – high flexible

| | |
|---|--|
| KAWEFLEX KINEMATICS® 3D-PUR Hybrid UL/CSA | for bending and torsion applications, 0,6/1kV, shielded elements, halogen-free, UL/CSA |
| KAWEFLEX KINEMATICS® 3D-C-PUR Hybrid UL/CSA | for bending and torsion applications, 0,6/1kV, overall shielded, halogen-free, UL/CSA |



Crane, conveyor and lift cables

Crane, conveyor cables are used in all applications related to material handling and lift applications describe specific solutions for either passenger transportation or freight lifts. Specific cables are needed for both applications as they are working with high speeds and / or permanent movement where on top of it cables need to carry its own weight. In our **LIFTEC®** portfolio dedicated for lift applications we see mainly PVC flat cables, partly with supporting elements. As communication inside of passenger lifts is today state of the art, we also offer cables for lift applications which can transport signals and even CAT.7 cables for fast data communication.

For crane systems there is a wide range of different cables needed which are in many cases subject to reeling or festoon applications, where either cables with improved mechanical performance due to the nature of the reeling application or fast trolley speeds in festoon usage are needed. Travelling speeds of up to 180m/min in reeling operations and up to 240m/min in festoon applications are requiring an adapted design to withstand this kind of mechanical stress.

On both application we see rubber or PUR cable designs where especially PUR designs offer improved weight and diameter combined with extra mechanical performance and on top halogen free compounds are used. Our **REELTEC® PUR-HF** and **FESTOONTEC® PUR-HF** are developed specially to combine those features and are available in shielded and unshielded designs.

Other than cables for standard installations, crane and lift cables are not subject to any CPR ratings.



**PVC-flat cables**

FESTOONTEC® H05VVH6-F, (H)05VVH6-F for festoon & lift applications, 300/500V, unshielded
 FESTOONTEC® H07VVH6-F, (H)07VVH6-F for festoon & lift applications, 450/750V, unshielded

PVC special flat cables, unshielded and shielded

FCK for festoon & lift applications, 300/500V, unshielded

FESTOONTEC® YCFLY, YFLCYK, KYCFLY, KYFLCY (EMC) for festoon & lift applications, 300/500V, shielded

FESTOONTEC® H05VVD3H6-F, KYFLTY, KYFLTY for festoon & lift applications, 300/500V, unshielded, steel supporting element

FESTOONTEC® KYCFLTY, KYFLTCY (EMC) for festoon & lift applications, 300/500V, shielded, steel supporting element

LIFITEC® (H)05VE7A7VH6-F for lift applications, 300/500V, shielded data pairs

Polychloropren flat cables

FN for festoon & lift applications, 300/500V, unshielded

FESTOONTEC® M(StD)HÖU (EMC) for festoon & lift applications, 0,6/1kV, shielded

Halogen-free flat cables

SAN-F for festoon & lift applications, 300/500V, unshielded, halogen-free, +110 °C, ECOLAB

FESTOONTEC® LSOH for festoon & lift applications, up to 06/1kV, unshielded, halogen-free

FESTOONTEC® LSOH-C (EMC) for festoon & lift applications, up to 06/1kV, shielded, halogen-free

PVC lift cables

LIFITEC® KYSTY-MR for lift applications, 300/500V, unshielded, textile supporting element, mid rise supported

LIFITEC® KYSTCY, KYSTCUY (EMC) for lift applications, 300/500V, shielded, textile supporting element

LIFITEC® KYSTFU for lift applications, 300/500V, shielded, textile supporting element

LIFITEC® KYSTCY-MR (EMC) for lift applications, 300/500V, shielded, textile supporting element, mid rise supported

LIFITEC® KYSTFY-MR for lift applications, 300/500V, element shielded, textile supporting element, mid rise supported

LIFITEC® YSSTCY, YSSTVCY (EMC) for lift applications, DIN47100, 300V, shielded, steel supporting element

Cat 6a lift for lift applications, automation, shielded, IEC 60332-3-24

LIFITEC® CAT.7 - PVC for lift applications, automation, shielded, steel supporting elements

Halogen-free lift cables

LIFITEC® K12YSTU11Y for lift applications, 300/500V, unshielded, halogen-free, textile supporting element

LIFITEC® K2YSTFU11Y, K9YSTFU11Y for lift applications, 300/500V, element shielded, halogen-free, textile supporting element

LIFITEC® K9YSTCU11Y (EMC) for lift applications, DIN47100, 300V, shielded, halogen-free, textile supporting element

LIFITEC® CAT.7 - H for lift applications, automation, shielded, halogen-free, steel supporting elements, premium version

LIFITEC® CAT.7 - H-LC for lift applications, automation, shielded, halogen-free, steel supporting elements



PVC control cables with supporting element

LIFTEC® YMHY-KT
LIFTEC® YMHY-KST
LIFTEC® FYMYTW

for lift applications, 300/500V, unshielded, textile supporting element
for lift applications, 300/500V, unshielded, steel supporting element
for lift applications, 300/500V, unshielded, 2 steel supporting elements, unshielded

Polychloropren control cables with supporting element

LIFTEC® FLGÖU
LSTN
CN

for lift applications, 300/500V, unshielded, textile supporting element
for lift applications, 300/500V, unshielded, textile supporting element
for lift applications, 300/500V, shielded, textile supporting element

Lift components

LIFTEC® LAF 50 / 75 / 90
fastening material
LIFTEC® LAR X
and fastening material

suspension kits for flat cables, incl. cabin + wall mounting plates and
suspension kit for round cables, incl. cabin + wall mounting plates

Reelable cables

PRO-H
REELTEC® PUR-HF
REELTEC® (K) NSHTÖU, (N)SHTÖU
REELTEC® KSM-S (N)SHTÖU
REELTEC® KSM-S (N)SHTÖU+FO

for reeling applications, 600V, unshielded
for reeling applications, 0,6/1kV, unshielded, halogen-free
for reeling applications, 0,6/1kV, unshielded
for reeling applications, 0,6/1kV, unshielded
for reeling applications, 0,6/1kV, unshielded, + fiber optic elements

Trailing cables 1-30 kV

REELTEC® KSM-S (N)TSCGEWÖU
REELTEC® KSM-S (N)TSCGEWÖU + FO

3,6/6kV to 12/20kV, unshielded
3,6/6kV to 12/20kV, unshielded, + fiber optic elements

Control cables for cable trolley systems

FESTOONTEC® PUR-HF
FESTOONTEC® C-PUR-HF

for festoon applications, 0,6/1kV, unshielded, halogen-free
for festoon applications, 0,6/1kV, shielded, halogen-free





“

*State-of-the-art
cables that deliver
extreme
performance.*



Rubber cables

Rubber cables are widely used when a specific flexibility or high mechanical stress is needed, they are used for connection of tools and mobile equipment or i.e. on construction sites or as connection for distribution cabinets and also suitable in wet or humid environment and partly even in application in water.

Different other applications require specific designs like i.e. welding applications or short circuit proof cables.

Specific highlight is our **H07RN-F PREMIUM** which combines the features of different other designs in one unique cable design where we have an answer for 5 different designs for low and high temperature, halogen free and water application combined in only one cable.



Light and middle rubber-sheathed flexible cables

H05RR-F, H05RN-F 300/500V, unshielded

Heavy rubber-sheathed flexible cables

H07RN-F, A07RN-F 450/750V, unshielded
 H07RN-F PREMIUM 0,6/1kV, +90 °C, unshielded, halogen-free
 NSSHOU 0,6/1kV, unshielded

Welding cables

H01N2-D, H01N2-E 100V, unshielded

Special rubber core

NSGAFÖ 1,8/3kV, unshielded
 NSHXAFÖ 1,8/3kV, unshielded, halogen-free



Extreme temperature cables

For applications where either due to electrical requirements a higher temperature on the core is needed or environmental conditions ask for higher temperatures, we have a wide range of different cables which answering this demand.

The scope depending on the application is as wide as the temperature range available as there are different solutions available to answer demands from -190°C up to $+350^{\circ}\text{C}$.

Materials incorporated could be Silicone, FEP, PTFE and others.





Silicone insulated cables for temperatures from -50 °C up to +180 °C

Single Core

| | |
|----------------------|--|
| SIMX-F | 300/500V, halogen-free, fine stranded |
| SIMX-D | 300/500V, halogen-free, solid |
| SIF/GL | 300/500V, halogen-free, fine stranded, glass-silk braided |
| SIFF | 300/500V, halogen-free, extra-fine stranded, high flexible |
| SIF/Z Black Ignition | 10 kV, halogen-free, fine stranded |

Multi Core

| | |
|-----------|--|
| SIMX | 300/500V, unshielded, halogen-free, fine stranded |
| SIMX-P | 300/500V, halogen-free, fine stranded, glass-silk and steel wire braided |
| SISV EWKF | 300/500V, halogen-free, fine stranded |

PTFE insulated cables for temperatures from -190 °C up to +260 °C

Single Core

| | |
|------|----------------|
| PTFE | 600V, stranded |
|------|----------------|

Multi Core

| | |
|---------|---|
| TEH-GLP | 600V, stranded, glass-silk and steel wire braided |
|---------|---|

Flexible nickel wire for temperatures from -60 °C up to +350 °C

| | |
|-----|---|
| NVS | 300V, stranded, glass-silk braided, Bureau Veritas approved |
|-----|---|

Special temperature versions up to +1550 °C

>> available upon request!

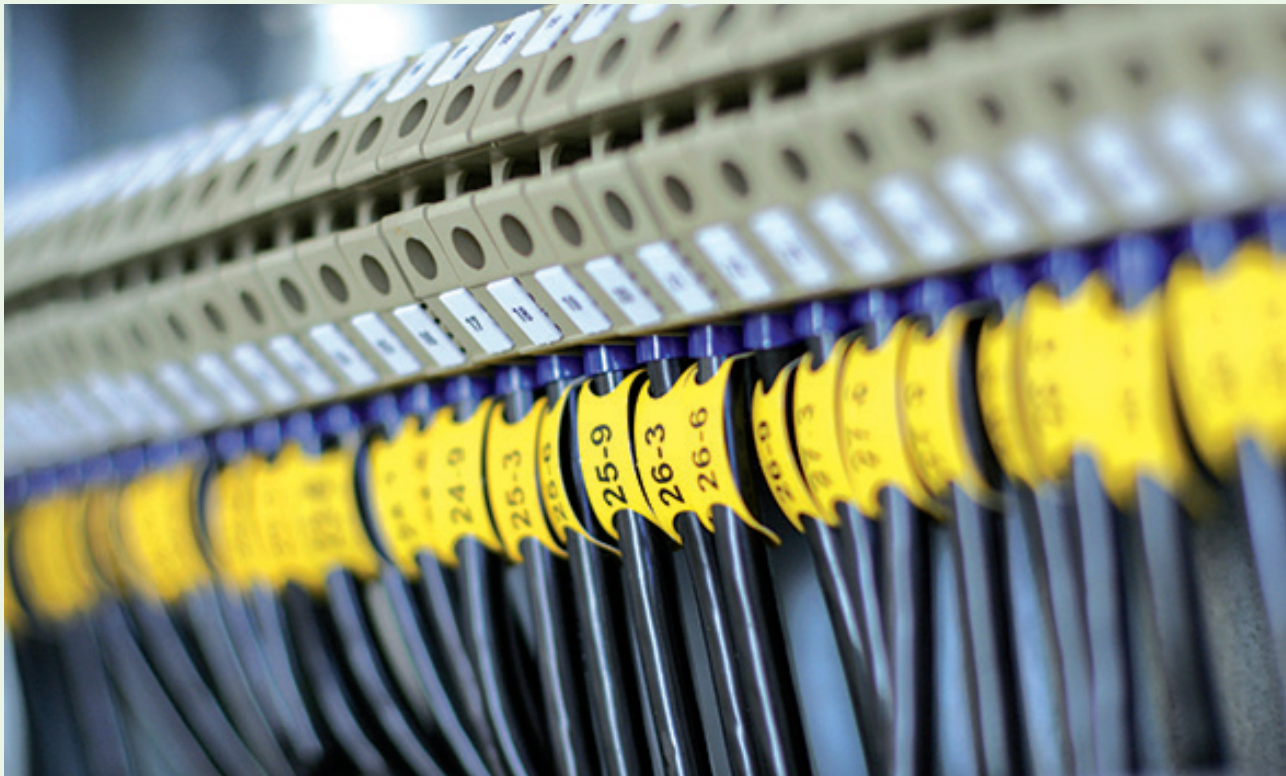


Cables and wires for fixed installation

Cables and wires for fixed installation can be found in almost every kind of electrical installation such as building and infrastructure or in many kinds of switchboard or cabinet installations.

The portfolio includes single wires with only insulation with different properties and approvals as well as multicore cables. As such kind of wires and cables are used in fixed installations there is very often a requirement for specific CPR approval and classification, therefore almost all our designs are CPR classified.

Especially the **YmZ1K** series are helping installers to choose the right design and properties to answer the CPR demands as those cables are halogen free which allows classification acc. to CPR class Cca or even B2ca.



PVC-insulated wiring cable for temperatures up to +105 °C

| | |
|-----------------|--|
| H05V2-K Eca | 300/500V, -5 °C up to +90 °C, HAR, CPR Eca |
| H07V2-K Eca | 450/750V, -5 °C up to +90 °C, HAR, CPR Eca |
| TRIOFLEX MS Eca | 300/500V (HAR), 600V (UL/CSA), 0,6/1kV (BS), -40 °C up to +105 °C, CPR Eca |

Halogen-free single cores

| | |
|---------------------|---|
| H05Z-K Eca | 300/500V, -5 °C up to +90 °C, HAR, CPR Eca |
| H07Z-K Eca | 450/750V, -5 °C up to +90 °C, HAR, CPR Eca |
| Installation Cables | |
| YmvK Dca | 0,6/1kV, -40 °C up to +80 °C, solid/stranded, CPR Dca |
| YmvK ss Dca | 0,6/1kV, -40 °C up to +80 °C, fine stranded, CPR Dca |
| VO YmvKas Dca | 0,6/1kV, -40 °C up to +80 °C, solid/stranded, steel wire braided (SWB), CPR Dca |
| VG YmvKas Dca | 0,6/1kV, -40 °C up to +80 °C, solid/stranded, steel wire armored (SWA), CPR Dca |

Halogen-free Installation Cables

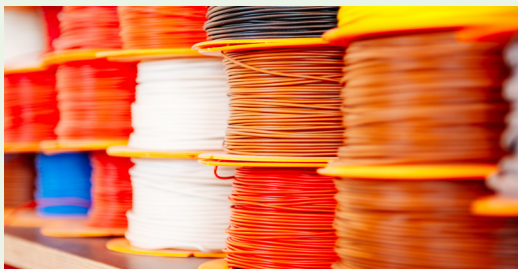
| | |
|--------------|--|
| YmZ1K Cca | 0,6/1kV, -40 °C up to +80 °C, halogen-free, solid/stranded, CPR Cca |
| YmZ1Kss Cca | 0,6/1kV, -40 °C up to +80 °C, halogen-free, fine stranded, CPR Cca |
| YmZ1Kas Cca | 0,6/1kV, -40 °C up to +80 °C, shielded, halogen-free, solid/stranded, CPR Cca |
| YmZ1K B2ca | 0,6/1kV, -40 °C up to +80 °C, halogen-free, solid/stranded, CPR B2ca |
| YmZ1Kas B2ca | 0,6/1kV, -40 °C up to +80 °C, shielded, halogen-free, solid/stranded, CPR B2ca |

Solar cables

| | |
|------------|---|
| VG-YMvK ER | 0,6/1kV AC and 1,5kV DC, -30 °C up to +90 °C, aluminum cable, PVC |
|------------|---|

Medium Voltage cables up to 36kV

Copper / Aluminum versions from 16 mm² up to 1000 mm² available on request



Special cables

As small introduction to the endless field of special cables we have the RADOX family in our scope.

RADOX cables are widely used in many applications such as Automotive, Railway and Marine applications. The ultimate advantage of the RADOX family is the E-Beam (Electron Beam) cross linking of the materials which makes cables usable for higher temperature. The cables are also halogen free and depending on the applications available in different standards like usage in Railway like trams and trains or in offshore conditions with NEK or shipboard class certification like DNV (Det Norske Veritas) .

For any other specific application i.e. cables for medical appliance please contact us

Instalcare®, the superior installation concept for operating theatres

Instalcare® is a unique installation concept specifically aimed at applications in medical areas and suitable for groups 1 & 2. Simplicity, time saving and cost reduction are the key words for this innovative, patented product.

Install

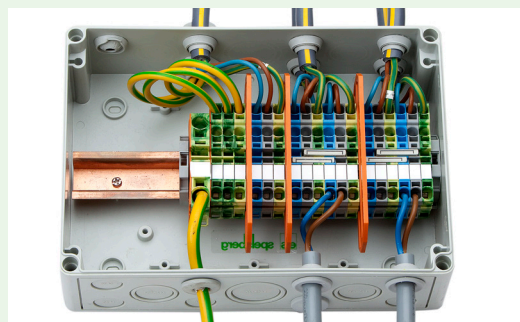
The traditional way of installation - the PE-net separate from the low voltage network - is thrown overboard by Instalcare®. Power supply and earthing are combined in the Instalcare® concept. This ensures a simple and smooth installation. Instalcare® makes the installation clear and unambiguous in all groups, reducing the time needed for periodic maintenance to a minimum.

Complete and certified concept

The simple installation is realised with a complete package of junction boxes, cable glands, terminals and cable. All components are attuned to each other and together provide a TNO-tested and approved installation that complies with the NEN 1010:2020 standard.

Pluggable box

The pluggable variant makes the time element even more important. Connecting becomes a matter of simply plugging the plug into the connector in the cabinet. Here too, the cabinet is customised in consultation with the installer.



RADOX Spectrum**RADOX AUTOMOTIVE 155**

- ... Auto B - single & multi core battery cables 1kV AC / 1,5kV DC, -40 °C up to +150 °C, shielded, halogen-free, ECE R118
- ... Auto L - single core battery cables 1kV AC / 1,5kV DC, -40 °C up to +150 °C, unshielded, halogen-free, ECE R118
- ... Anticapillary wires 60/600V DC, -55 °C up to +150 °C, stranded

RADOX AUTOMOTIVE

- ... Databus cables, various available types
- ... Sensor cables, various available types

RADOX RAILWAY

- ... Databus cables 120 Ohm 300V, fire resistant, halogen-free
- ... EN 50264 - single & multi core up to 3,6/6kV, halogen-free
- ... EN 50306 - single & multi core 500V/600V, halogen-free
- ... Tenuis TW - single & multi core 0,6/1kV, unshielded/ shielded, halogen-free
- ... GKW-LW - single & multi core 0,6/1kV, unshielded/ shielded, halogen-free
- ... 3 GKW - single & multi core 0,6/1kV, unshielded/ shielded, halogen-free
- ... 4 GKW-AX - single & multi core 1,8/3kV, unshielded/ shielded, halogen-free
- ... 9 GKW-AX - single & multi core 3,6/6kV, unshielded/ shielded, halogen-free
- ... Jumper cables - single & multi core up to 3,6/6kV, -40 °C up to +110 °C, halogen-free

RADOX MARINE

- ... MFH-S B - multicore & multipair cables 0,6/1kV, -40 °C up to +120 °C, shielded, halogen-free, acc. ship/ offshore standards (NEC TS 606, DNV, IEC 60092-360 etc.)

RADOX 125

- ... Type 125 - single & multi core up to 0,6/1kV, -40 °C up to +125 °C, unshielded/ shielded, halogen-free, acc. ship/ offshore standards (DNV, IEC 60092-360), CPR Eca/ Dca

RADOX 155

- ... Type 155 - single & multi core up to 0,6/1kV, -40 °C up to +155 °C, unshielded/ shielded

Diverse Specials

- ARMAFLEX & ARMAFLEX-T lighting fixtures cables, with/ without relief wire
- CAMFLEX combi cables (power + coax) for camera systems
- CAREFLEX combi cables (power + visible PE) for medical appliances
- INSTALCARE power cable for use in Instalcare medical room concepts

Individual, custom made cable solutions

It is our aim to find the best possible solution for your requirements however complex or unique those requirements might be. In addition to our standard product range we actively develop product and system solutions with our customers to meet their specific needs. Our tailor-made solutions convince through operational excellence, quality and economic efficiency.

We gladly provide personal in-house and/or on-site advice. CCG sales representatives and technical engineers are available to answer your technical queries regarding application, product characteristics and choice of materials. Our customers can benefit from our cable technology know-how straight from the beginning of the products' development stage.

CONNECTivity

Connectivity consolidates all different cable solutions together with activities like cutting, labelling, printing or preparation with cable lugs, end sleeves or connectors to an either ready to install or even plug and play solution.

It could also include further preparation with cables hoses or even spiral cables or cables ready to install for i.e. servo motors in line with requirements from well known companies like Bosch Rexroth, SEW Eurodrive, Siemens, Lenze, Sick and many others. For any demand on Connectivity solutions / cable preparation / ready to install solutions, feel free to contact us.





Spiral cables

| | |
|--------|---|
| SP-TPE | 300/500V, halogen-free, oil resistant, -30 °C up to +90 °C, PUR |
| SP-ASS | assembled SP-TPE spiral cable (attached connectors) |

Ready made cable assemblies

- Servo assemblies acc. to system standards compatible systems such as e.g.:
b&R , baumüller, berger lahr, Control Techniques, elaU , Fagor, FaNUC, Heidenhain, Jetter, lenze, IT i DRiVeS, NUM, Omron, Rexroth, SeW, Siemens, Sick, Stöber, a.o.
- Woven ribbon cable
- assembled reeling cables
- Fiber Optic assemblies
- assembled drag chain systems
- assembled fiber optic cable car
- assemblies for elevator industry
- etc.

... for

- engines and controls
- Operating devices/controls for machine tools, mobile pumps, robots and operational equipment
- Measuring systems for the process industry
- Operating devices for hospital beds
- Power and data transmission in operating tables
- Mechanical & Plant engineering
- building and mining machines
- Passenger and goods elevators
- Space and aviation technology
- Crane and harbour constructions
- etc.





*Our tailor-made solutions
convince through
operational excellence,
quality and economic
efficiency.*

Cable gland systems

BIMED
HUGRO

cable glands (polyamide, brass, EMC)
cable glands (polyamide, brass, EMC)

Cable connection

ELPRESS

range of crimping products (tools, terminals etc.)

Drag chain system

EKD

complete drag chain systems (plastic & steel)

Cable protection systems

PMA
ADAM HALL

cable protection hoses and accessories
cable protection crossovers/ bridges

Lift components

LIFTEC® LAF 50 / 75 / 90
LIFTEC® LAR X

suspension kits for flat cables, incl. cabin + wall mounting plates and fastening material
suspension kit for round cables, incl. cabin + wall mounting plates and fastening material



PMA® cable protection hose & accessories

Industry cable protection

PMA® cable protection system for automation applications

This PMA cable protection system is designed to protect cables and wires in extreme automation and robotics installations. Different types of cable for different requirements, system supports and a range of special accessories help to avoid torsion and minimise stresses on the cables.

PMA® Conduits in ATEX

A selection of protective hoses and accessories are also ATEX-IECEx approved where the environment requires this. This means that PMA products can also be used in areas where there is a risk of explosion.

These include environments which can occur in the offshore industry as well as in the food and pharmaceutical industries.

PMA® JFBD Smooth cable protection hose for the food and beverage industry.

The key to any cable protection system, especially in the food and beverage industry, is the ability to protect the cables from ingress of liquids and small solid particles.

The smooth conduits and accessories of the JFBD series meet all the requirements of the food and beverage industry for cable protection. The smooth design makes the hose easy to clean and meets the IP68 and IP69 classification which makes it suitable for high pressure cleaning up to 80 bar.



PMA® cable protection hose & accessories

Industry cable protection



PMA® Conduits



PMA® Jumbo sizes



PMAFIX



PMAFIX Pro



PMAJACK



PMA® Divisible Portfolio



PMA® Food & Beverage



PMA® Automation

PMA® cable protection hose & accessories

Industry cable protection

PMA TRUST™ modular support system for rail

PMA TRUST™ modular support system is a lightweight, compact solution with high impact resistance. Thanks to the new design, external dimensions are reduced the very minimum and internal spacing between adjoining conduits is very small. Each element can hold different combinations of both, conduits and cables in various sizes.



PMA® FLEX & PMA® FIX Plus

- Highly Robust UL Listed Cable Protection System

PMA® Special Products

- Custom build solutions with special productions of fittings and conduits

Fire Barrier Solutions

- Fire protection solutions

PMA® EX-System

- Protection of cables, wires and hoses

PMA® EMC-System

- Metal braids for protection against electromagnetic interferences

PMA® Conduits

- Large range of mono- and multilayer conduits for high technical demands

PMAFIX

- Large and varied range of connectors and conduits

PMAFIX Pro

- Improved connectors and conduits with two components: outer body and inner sealing element

PMAJACK

- Alternative way to bundle and protect electrical cables with polyamide, polyester and steel braids

PMA® Food & Beverage

- Cable protection in the food and beverage industry with overextrusion technology

PMA® Jumbo sizes

- Larger sizes for big solutions

PMA® Divisible System

- Divisible, one-piece design for repairs, retrofits and pre-loomed applications

PMA® Automation

- Protection against abrasion and preventing wear through the insulation



“

PMA® offers a large range of different conduits and system solutions.

A safe future with durable and safe electrical connections

Crimping tools & cable lugs

Elpress has been developing new solutions for electrical connections for decades. Development, validation and testing take place in our laboratories. Thanks to many years of experience in electrical connections, we come up with solutions that meet international standards as well as industrial requirements in wind and solar energy, distribution and transmission networks, as well as transformer, generator and vehicle manufacturers.

Patented solutions

Elpress has a wide range of high quality products and solutions, such as patented KRF, DUAL and C-sleeves.



KRF

Elpress' patented KRF range is a cable lug available in sizes from 50 to 400 mm². The contact area has the same or smaller width as the diameter of the ferrule. This allows for pre-installation and allows the cable lug to pass through the gland. To enable installation in confined spaces, the contact area on a KRF terminal has a smaller surface area than a KRF standard terminal. Elpress has a very wide range of cable lugs for flexible cores from 6 to 800 mm² including professional crimping tools.



DUAL

With the changes in conductive materials and constructions, as well as the changing industrial requirements in different segments, Elpress has continuously developed its solutions. With the DUAL crimping technology, Elpress was the first in the world to introduce a technology which further develops the traditional crimping technology especially for the highly flexible copper conductors. Repeatability and user-friendliness were as important as functional requirements during this development.



C-sleeves

Elpress has developed its programme with branching sleeves, which previously consisted of 41 C sleeves. Today this has been compressed to 8 sleeves. Each sleeve range has been further extended and the number of moulds required for contact crimping has therefore been reduced. The C-sleeves naturally have the same high quality as before and have been tested and approved together with Elpress tools. These branch-off sleeves are suitable for splitting and branching off Cu conductors for earthing, lightning conductor installations and other earthing and potential equalisation applications.

Rechargeable crimping tool

PVX1300

The PVX1300 crimping tool is the latest tool equipped with Elpress's patented DUAL technology. The PVX1300 crimping tool has an ergonomic design and is highly flexible in use, thanks in part to its pivoting head and battery pack. The PVX1300 is powered by a battery pack which makes it mobile in locations where there is no electricity.

The tool is 100% reverse compatible and has been tested and approved for use with Elpress B-dies and DUAL moulds. A feature of the tool is a display that gives you valuable information about your tool, for example the number of crimps performed, battery status, maintenance intervals, etc. The PVX1300 comes with a new ergonomic design and shrink head that offers you, the user, improved performance and ease of use. The fork is made from 100% recycled steel and has been tested for quality and safety. The tool comes with a 2-year warranty*. There is also the option to set a "safety start" on the tool.



Features

- ergonomic design
- rotating head
- crimp force regulation by means of pressure monitoring
- DUAL shrinkage technology
- Display with tool information and service intervals
- shrinkage monitoring with warning light (LED)
- 2-year warranty

Battery-powered crimping tool for contact crimping Cu terminals, type KRF/KSF 10-400 mm², Al terminals 16-400 mm² (-240 solid), C-sleeves 6/6-120/120 mm².

Hydraulic Pump

PS710

PS710 is a hydraulic battery / 220V driven pump for shrinking with advanced control and monitoring of the shrinking procedure. It is a flexible system for almost all crimping applications where high performance and reliability are required. The pump is suitable for both the production of cable harnesses and for electrician's work in the installation field. The PS710 has the flexibility for every type of crimping work. This is made possible by the fact that various attachments can be mounted on this pump.



Depending on the type of shrinkage required, these attachments can be mounted

- Shrink station CS2500
- Shrink system: 1300 / 600 / 250

Technical data PS710

- Possible to use different working pressures, 0 to 700 Bar
- PC software for shrink analysis and integration of quality process
- Can be used with a PC in a data network with a printer
- Small dimensions 370x250x160 mm and weight approx. 11 kg
- Mains voltage 100-240 VAC 50-60 Hz - Li-ion battery 28.8 V

Steel, stainless and plastic EKD drag chain & accessories

Portfolio EKD

EKD supplies steel, high quality stainless steel and plastic cable tracks. These are designed for installations where the cabling, air lines and/or hydraulic lines need to be mechanically supported, thus ensuring a long service life for the package.

All standard plastic tracks are made of recyclable high quality polyamide 6 reinforced with 35% glass fibre (PA6 GF35), which allows them to be used in a temperature range between -20 °C and +100 °C.

In addition, other synthetic materials can be used for special environmental requirements. Among others for: ATEX, ESD, HI, FDO, V-0, cleanrooms and environments with acids and alkalis.

System Marathon

The SYSTEM MARATHON is designed for long travel distances and high speeds.

The upper part of the cable track runs on a flat edge of the guide rail by means of roller sets. The construction prevents sliding friction between the upper and lower parts of the track, which significantly increases the track's life span.

Using the roller sets, very little force is required to move the track. The track continues to run at the radius height which also benefits the cables and/or pipes placed in the track.

Measurements with the SYSTEM MARATHON confirmed that a reduction of friction forces of up to 90% is possible.

Drag chain variants



Kolibri

Plastic version. Suitable for light applications.



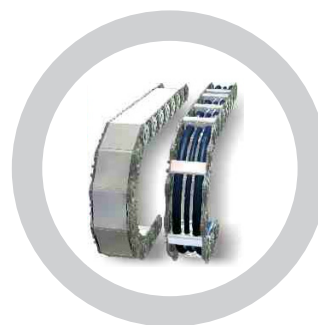
PLE

Plastic with aluminium bars. Suitable for medium & heavy applications.



PKK

Plastic version. Suitable for light to medium applications / all-rounder.



SLE

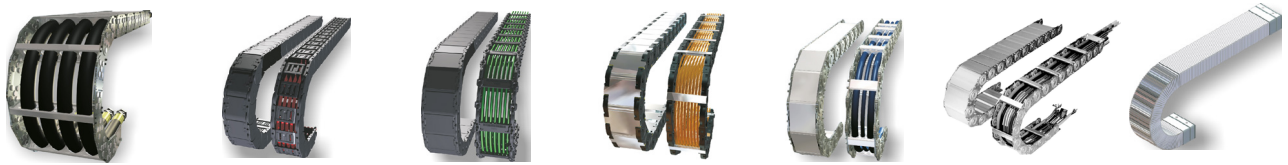
Galvanic steel / Zinc nickel / Hardened steel / SS 316 version. Suitable for medium & heavy duty applications.

Steel, stainless and plastic

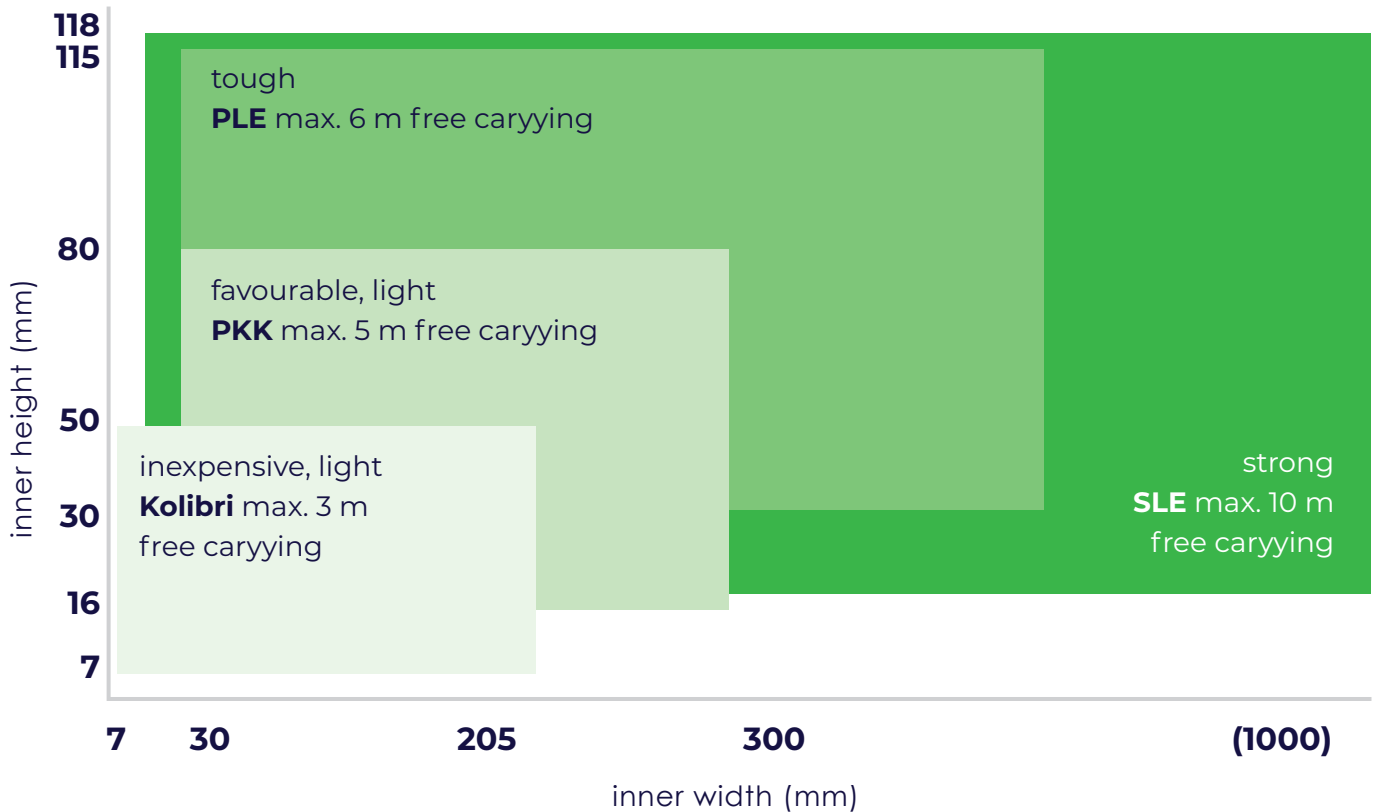
Custom made on request

At customer request, we can go further than just supplying a drag chain. If required, we can also supply the contents of the track needed for your installation, together with the accessories. In this way, we can deliver a fully functioning system for you in which all aspects are geared to one another.

Assortment and Application areas



- GKA large chains
- SLE steel chains
- SFK steel tubes
- Machine tools
- Welding machines
- Rolling mills
- Offshore...





“

***System Marathon used
in a train washing plant.
Travel distance: 180 meters***



CCG worldwide

Industries

Our companies are active in a broad selection of industries. Contact us to discuss our custom solutions for your specific industry.

- Machine building
- Industrial automation
- Energy
- Marine & offshore
- Automotive
- Public infrastructure
- Agriculture
- Lifts and escalators
- Transportation infrastructure
- Cranes & material handling
- Train, tram and metro industry
- Telecommunication and datacentres
- Food & beverage





JOBARCO

Jobarco B.V.
Verbreepark 15
2731 BR Benthuisen
Phone +31 (0)79 331 93 13
E-Mail info@jobarco.com

www.jobarco.com

 **pantaflex**

Pantaflex B.V.
Verbreepark 15
2731 BR Benthuisen
Phone +31 (0)79 3310 007
E-Mail info@pantaflex.nl

www.pantaflex.nl



CABLE
CONNECTIVITY
GROUP

